

If Only It Were

For Alto Saxophone, Trombone, Piano, and Drum Set

Loretta K. Notareschi

If Only It Were

For Alto Saxophone, Trombone, Piano, and Drum Set

Loretta K. Notareschi



Wheat Ridge, CO

www.disegnimusic.com

Copyright © 2022 Loretta K. Notareschi (ASCAP). All rights reserved.
Unauthorized duplication is prohibited.

Instrumentation

Alto saxophone

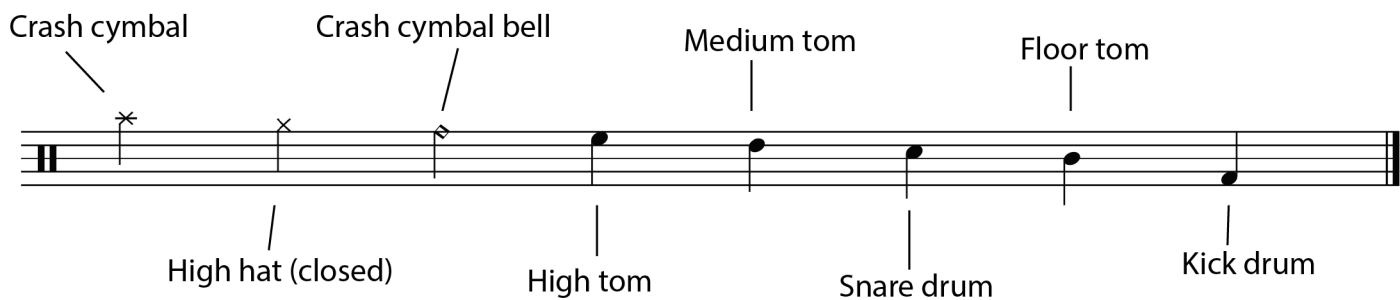
Trombone

Drum Set (with kick drum; crash cymbal; snare drum; high, medium, and floor toms; and high hat)

Piano

Drum Set

Drums/percussion are *sempre l.v.*



Duration: c. 6'30"

About the Music

If only it were...true? Better? Easier? This piece is the conditional and the subjunctive dreaming of a more perfect present and a rosier future. The first theme (at letter A) is declarative/certain: it will be! The second (at letter C) is interrogative/searching: when will it be? When will it get better? The third theme (at letter F) is subjunctive/wistful: I wish it were so! These moods mix throughout *If only it were* to express our desire to live in a better world.

-LKN

If Only It Were

Loretta K. Notareschi

Vivid and Bright ♩ = ca. 120

Alto Saxophone in Eb

Trombone

Drum Set

f (as written or similar)

Vivid and Bright ♩ = ca. 120

Piano

This block contains the first system of the musical score. It features four staves: Alto Saxophone in Eb (treble clef), Trombone (bass clef), Drum Set (drum notation), and Piano (grand staff). The tempo is marked 'Vivid and Bright' with a quarter note equal to approximately 120 beats per minute. The drum set part includes a snare drum pattern with 'x' marks for cymbals. The piano part is currently silent.

Alto Sax.

Tbn.

Dr.

Pno.

4

A

f

f

f

A

This block contains the second system of the musical score, starting at measure 4. It features four staves: Alto Sax (treble clef), Tbn. (bass clef), Dr. (drum notation), and Pno. (grand staff). The tempo remains 'Vivid and Bright'. The saxophone and trombone parts have melodic lines with accents and slurs, both marked with a forte (*f*) dynamic. The drum set continues with its snare pattern. The piano part begins with a chordal accompaniment, also marked with a forte (*f*) dynamic. A boxed 'A' indicates the start of a section.

7

Alto Sax.

Tbn.

Dr.

Pno.

10

Alto Sax.

Tbn.

Dr.

Pno.

13 *gr*^b

Alto Sax.

Tbn.

Dr.

Pno.

f

growl

ord.

f

f

B

16

Alto Sax.

Tbn.

Dr.

Pno.

18

Alto Sax.

Tbn.

Dr.

Pno.

20

Alto Sax.

Tbn.

Dr.

Pno.